



PRICE GUIDE

£575,000

East Road

London, N1 6FB

Guide Price £575,000 - £600,000

Set within a modern private development located close to Old Street Station is this 2 bedroom, 2 bathroom apartment.

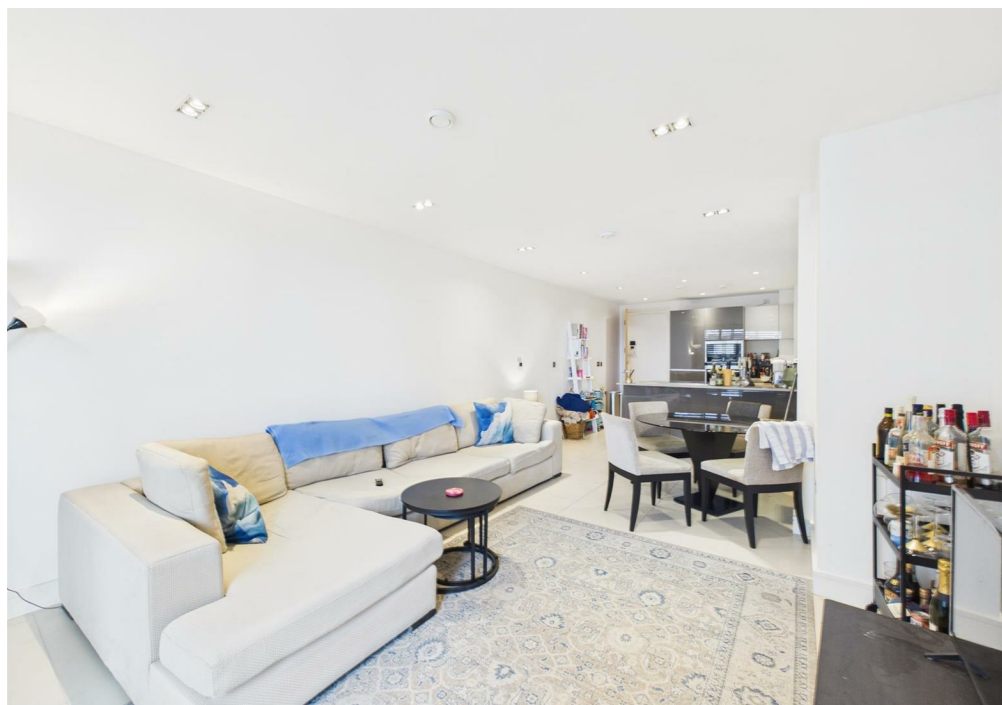
The property features a bright open plan reception room with modern fitted kitchen and private balcony.

There are 2 double bedrooms, en-suite to master and further double bedroom.

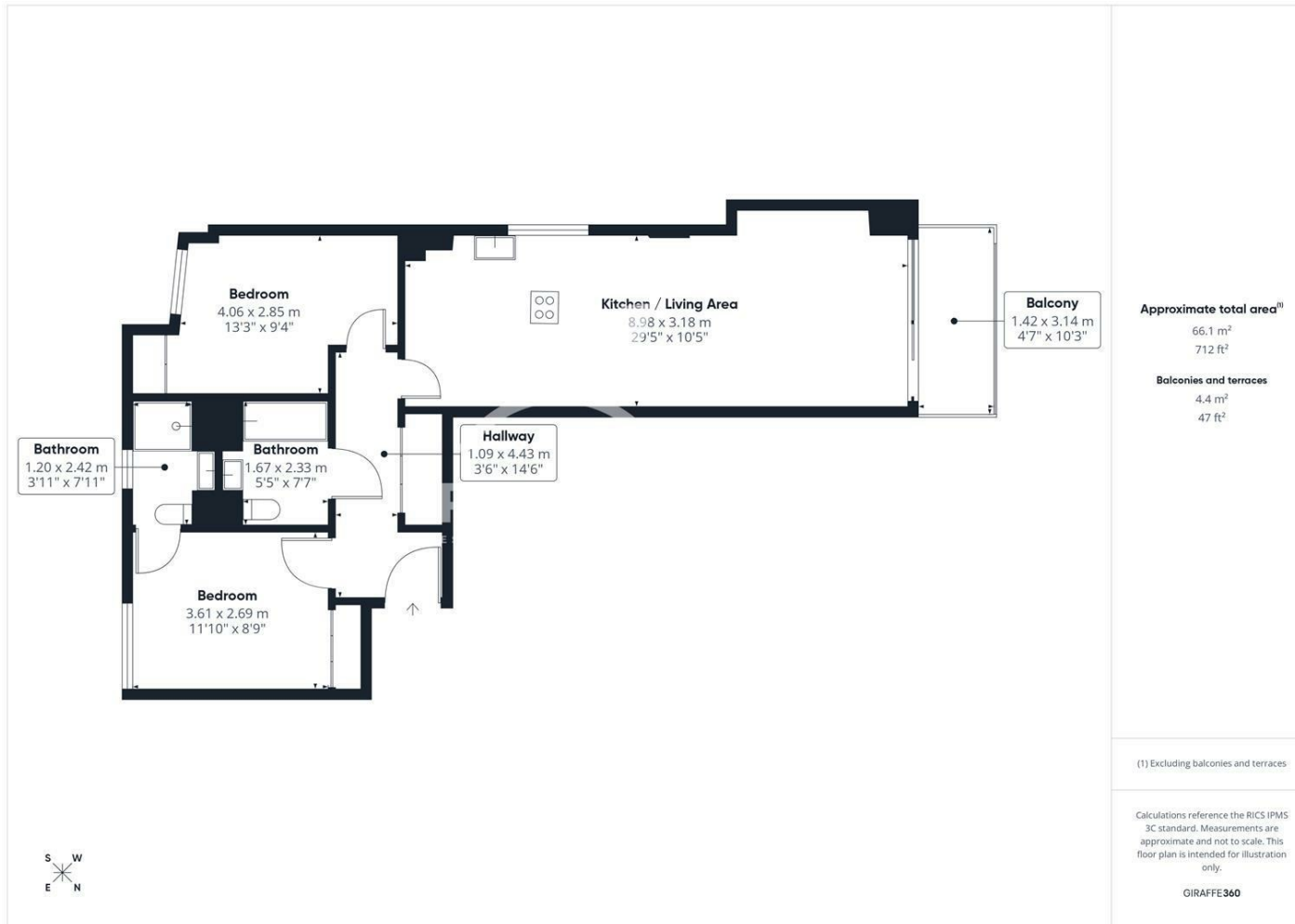
Located close to City Road with convenient access to Old Street, Angel, and Barbican stations, along with numerous bus routes, it's a prime location for both corporate and creative professionals.

Remedial works are planned to take place during 2026. A letter of comfort is available confirming that no remediation costs will be passed onto qualifying leaseholders (as defined under the Building Safety Act 2022).

Leasehold: 986 leasehold
Service Charge: £4225.05
Ground Rent:
Council Tax: Band E







Agents Note: Whilst every care has been taken to prepare these particulars, they are for guidance purposes only. All measurements are approximate and are for general guidance purposes only and whilst every care has been taken to ensure their accuracy, they should not be relied upon and potential buyers/tenants are advised to recheck the measurements

OFFICE ADDRESS
88 Cheshire Street
London
E2 6EH

OFFICE DETAILS
0207 739 6969
info@peachproperties.com
www.peachproperties.com